

# START-X™

ACHIEVE HIGHER CONTROL AND PRECISION WITH  
ULTRASONIC INSERTS SPECIFICALLY DESIGNED FOR **ACCESS**  
**CAVITY REFINEMENT AND CANAL ORIFICE LOCATION**



**A well prepared access cavity and location of canal openings** are recognized as key factors to the **success of endodontic treatments**

The use of ultrasonic inserts is advised for these applications thanks to two main characteristics:

- A great working precision
- An incomparable view of the operative field

DENTSPLY Maillefer has therefore developed, together with Dr Berutti, Dr Cantatore and Dr Castellucci, a range of ultrasonic tips based on a simple concept **ONE TIP - ONE CLINICAL INDICATION**



Each tip has been designed for a specific indication and has the following main characteristics:

#### **MICRO MILLED ACTIVE PART**

- Minimized risk of potential diamond grit loss in the patient's mouth

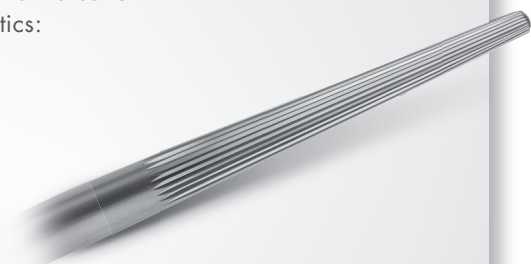
#### **WATER PORT**

- Cools down the insert and avoids overheating of the treated tooth. This is particularly important when removing metal posts which usually require high energy
- The intermittent use of irrigation enables the clinician to alternate between dry precision work and debris evacuation

#### **EXCELLENT RESISTANCE TO FRACTURE**

“According to my clinical experience, the START-X™ tips are one of the most fracture resistant ultrasonic inserts I have used.”\*

Professor Elio Berutti



\*Individual clinical results may vary

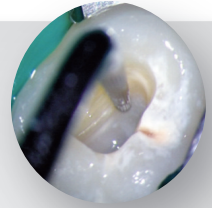
## ONE TIP – ONE CLINICAL INDICATION

1



### START-X™ #1

- > **Application**
  - Access cavity wall refinement
- > **Non active tip**
  - Avoids accidentally damaging the pulp chamber floor
- > **Active lateral part**
  - Creates a straight access to the canal

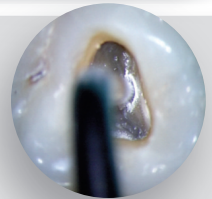


2



### START-X™ #2

- > **Application**
  - MB2 canal scouter  
(2<sup>nd</sup> canal mesio buccal root)
- > **Active tip**
  - Removes the dentine that often conceals the MB2 access in upper molars
- > **Active lateral part**
  - Creates a straight access to the canal

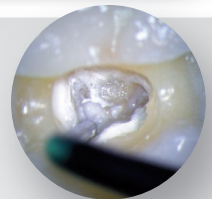


3



### START-X™ #3

- > **Application**
  - Canal openings scouter
- > **Active tip**
  - Removes the obstructions that prevent a straight access to the canal

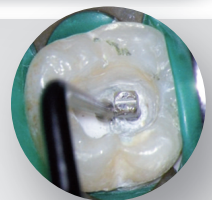


4



### START-X™ #4

- > **Application**
  - Metal post removal
- > **Specific design**
  - Suitable for working efficiently both on the top and the sides of the metal post
- > **Water port**
  - Avoids over heating

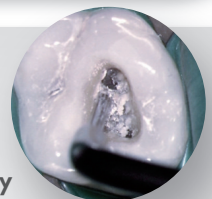


5



### START-X™ #5

- > **Application**
  - Reveals the original pulp chamber floor anatomy
- > **Active tip**
  - Canal orifice location made easier thanks to the removal of calcifications and filling materials that hide the original pulp chamber floor anatomy
- > **Thin and cylindrical tip**
  - Good visibility



## POWER SETTINGS

In general, within the recommended guidelines, start with a lower power setting and only increase the power if necessary to safely accomplish the procedural task

SATELEC P5 NEWTRON			EMS MINIPIEZON		
	Min ←	Max →	Min ←	Max →	
START-X™ 1	16	18	8	9	
START-X™ 2	16	18	8	9	
START-X™ 3	10	18	4	7	
START-X™ 4	18	20	9	10	
START-X™ 5	7	18	3	8	

Power settings for other ultrasonic units are available on DENTSPLY Maillefer website [www.dentsplymaillefer.com](http://www.dentsplymaillefer.com)

- The power setting is adjusted depending on the specific clinical application
- The inserts have been designed to be exclusively used with a Piezo ultrasonic generator
- Technical specification/thread: EMS type M3 x 0.5mm  
Satelec type M3 x 0.6mm

## REFERENCES

M3x0.6mm SATELEC type	M3x0.5mm EMS type	START-X™ 1	START-X™ 2	START-X™ 3	START-X™ 4	START-X™ 5
A 0660-1	A 0661-1	•				
A 0660-2	A 0661-2		•			
A 0660-3	A 0661-3			•		
A 0660-4	A 0661-4				•	
A 0660-5	A 0661-5					•
A 0660-900	A 0661-900	•	•	•	•	•

Available on Dentsply Maillefer website [www.dentsplymaillefer.com](http://www.dentsplymaillefer.com)  
a video from Dr Berutti, Dr Cantatore and Dr Castellucci, illustrating the use of each START-X™ insert



MAILLEFER INSTRUMENTS HOLDING S.à.r.L  
CHEMIN DU VERGER 3  
CH-1338 BALLAIGUES  
SWITZERLAND

[www.dentsplymaillefer.com](http://www.dentsplymaillefer.com)

